

EQUIP. TYPE *R390A/HRR* EXP. NO.

Col. 540 7497 002

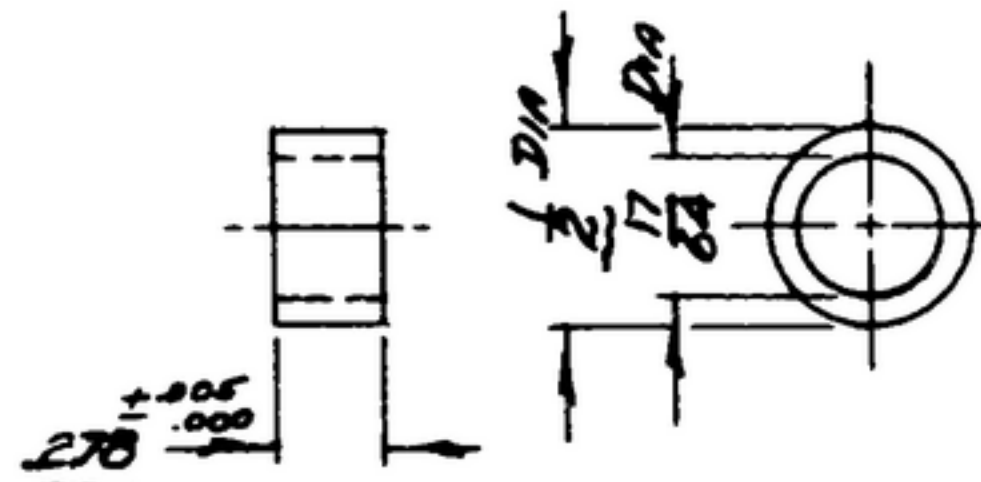
NOTICE: WHEN GOVERNMENT SPECIFICATIONS, OR OTHER DATA ARE USED FOR ANY PURPOSE OTHER THAN IN CONNECTION WITH A SPECIFICALLY RELATED GOVERNMENT PROCUREMENT OPERATION, THE UNITED STATES GOVERNMENT THEREBY ASSUMES NO RESPONSIBILITY FOR ANY OMISSION, ERROR, OR THE FACT THAT THE GOVERNMENT MAY HAVE FORMULATED, FORWARDED, OR IN ANY WAY SUPPLIED THE SAID DRAWINGS, SPECIFICATIONS, OR OTHER DATA IS NOT TO BE REGARDED BY REPLICATION OR OTHERWISE AS IN ANY MANNER ENDORSING THE MERITS OR ANY OTHER MERITS OR SUPERIORITY, OR CONFIRMING ANY RIGHTS OR PRIVILEGES TO INVENTION, USE, OR SELL ANY PATENTED INVENTION THAT MAY IN ANY WAY BE RELATED THEREBY.

THIS DOCUMENT HAS BEEN FORWARDED BY THE GOVERNMENT AND MAY BE REPRODUCED AND USED IN CONNECTION WITH ANY GOVERNMENT PROCUREMENT OR EXCHANGE OPERATION.

*FOR INFORMATION ONLY, CONTRACTOR MAY AT HIS OPTION DEVIATE FROM THESE PROCESS DETAILS.

**SHE APPROVAL
SYM PR10042-5*

REVISIONS			
SYM	DESCRIPTION	DATE	APPROVAL
<i>A₃</i>	<i>A₁-RENUMBERED NOTES; A₂-ADDED APPL. SM-C-343598, SM-C-343597;</i>	<i>9 OCT. 59</i>	<i>42428-PC -59-AI-51 REV'D. PME</i>
<i>B</i>	<i>WAS 245</i>	<i>2-DEC-60</i>	<i>42428-PC-34 REV'D PME</i>



- NOTES: **(A₁)** **(B)**
- ALUMINUM ALLOY 2024, TEMPER T4, PER SPEC QQ-A-268.
 - FINISH: E 513 PER MIL-F-14072.

COLLINS PART NO.	ITEM	QTY	PART NO.	DESCRIPTION	MATL	MATL SPEC.
LIST OF MATERIAL						
-COLLINS PART NO. <i>558 0285 002</i>						

DRAWN <i>RDG</i>		CHECKED <i>Williams</i>		APPROVED		-COLLINS RADIO CO. -GRANT RAPIDS, IOWA <i>14214-PH-51-93</i>		DEPARTMENT OF THE ARMY SIGNAL CORPS ENGINEERING LABORATORIES FORT MONMOUTH NEW JERSEY			
SM-C-343598		SM-C-343597		UNLESS OTHERWISE SPECIFIED: DECIMAL DIMENSIONS INCLUDING HOLE SIZES MAY VARY ±.008 FRACTIONAL DIMENSIONS INCLUDING HOLE SIZES MAY VARY ±1/64 MACHINED ANGLES MAY VARY ±1° SHEARED ANGLES MAY VARY ±.25° BROKEN ANGLES MAY VARY ±1° ECCENTRICITY BETWEEN ANY DIAMETERS ON THE SAME CENTERLINE SHALL NOT EXCEED .010 TOTAL INDICATOR READING. ALL DIMENSIONS ARE FINISH DIMENSIONS INCLUDING APPLIED FINISH AND ARE GIVEN IN INCHES.		SIGNAL CORPS				<i>BUSHING - SPECIAL</i>	
<i>558 0310 003</i> +		<i>SM-C-248961</i>				REVIEWED <i>PME</i>		<i>SM-B-248936</i>			
<i>558 0369 003</i> +		<i>SM-C-248960</i>		<i>SC-DL-248975</i>		APPROVED <i>HLV</i> <i>PME</i>					
COLLINS NO.		QTY		NEXT ASSY		USED ON		DATE <i>6 DEC 1955</i>		SCALE <i>2/1</i>	
APPLICATION											